

PART OF N.W. 1/4 OF SEC. 27, T7N., R. 1W. S.L.B. & M.
CAMARREN COVE ESTATES SUBDIVISION

99

PHASE 3
 LOTS 109-133

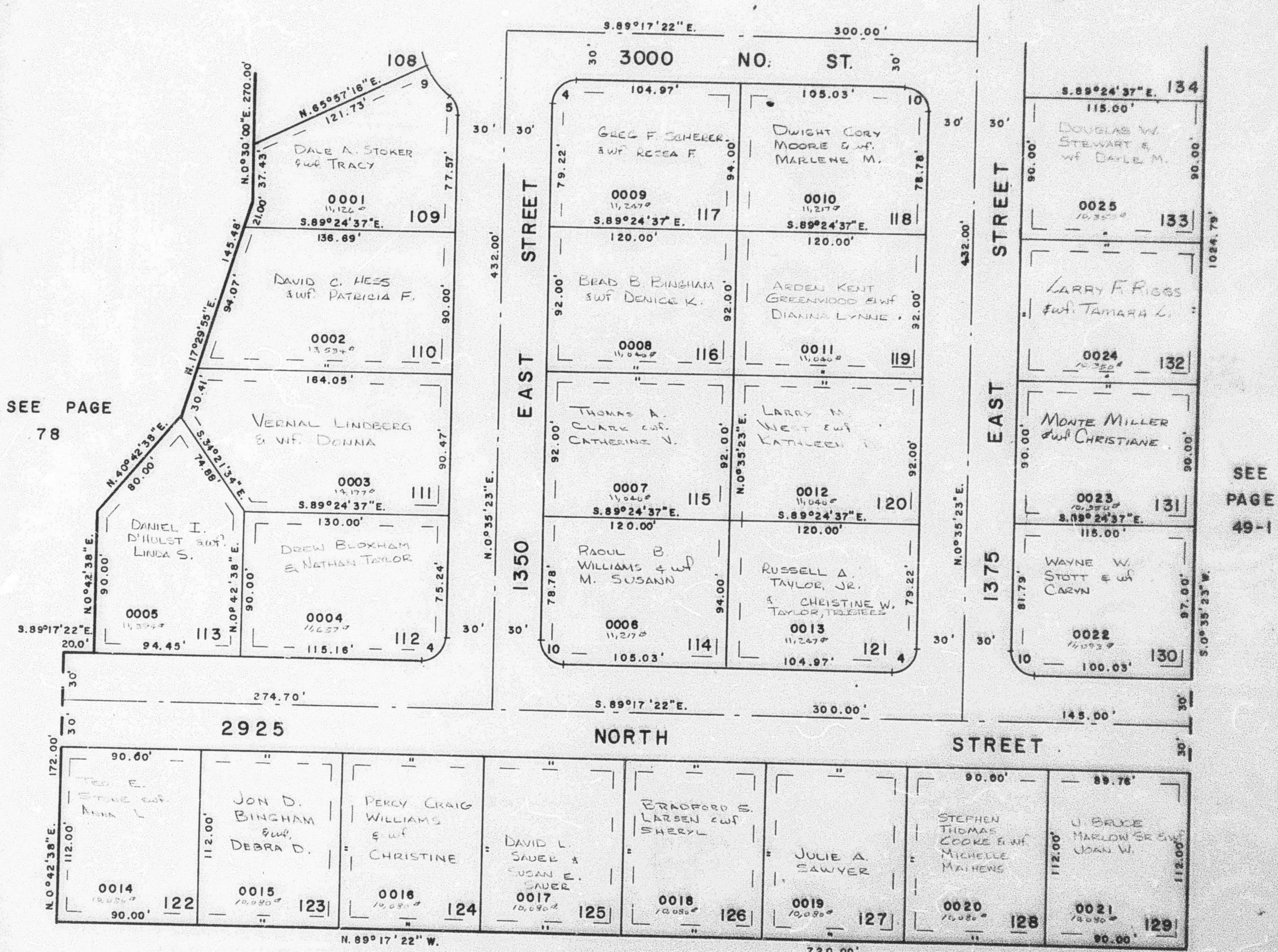
TAXING UNIT : 10

IN NORTH OGDEN CITY

PREFIX : 16 - 099

SCALE 1" = 50'

SEE PAGE 98



SEE PAGE 49-3

CURVE DATA			
4	5	9	10
Δ = 90°07'18"	49°59'41"	25°21'34"	89°52'45"
R = 15'	15'	55'	15'
ARC 23.59'	13.09'	24.34'	23.53'
T = 15.03'	6.99'	12.37'	14.97'

ESMTS. 7' WIDE & ARE
 UTILITY & DRAINAGE ESMTS.

FOR COMPLETE ENG. DATA
 SEE ORIG. DED. PLAN IN
 BOOK 21, PAGE 26